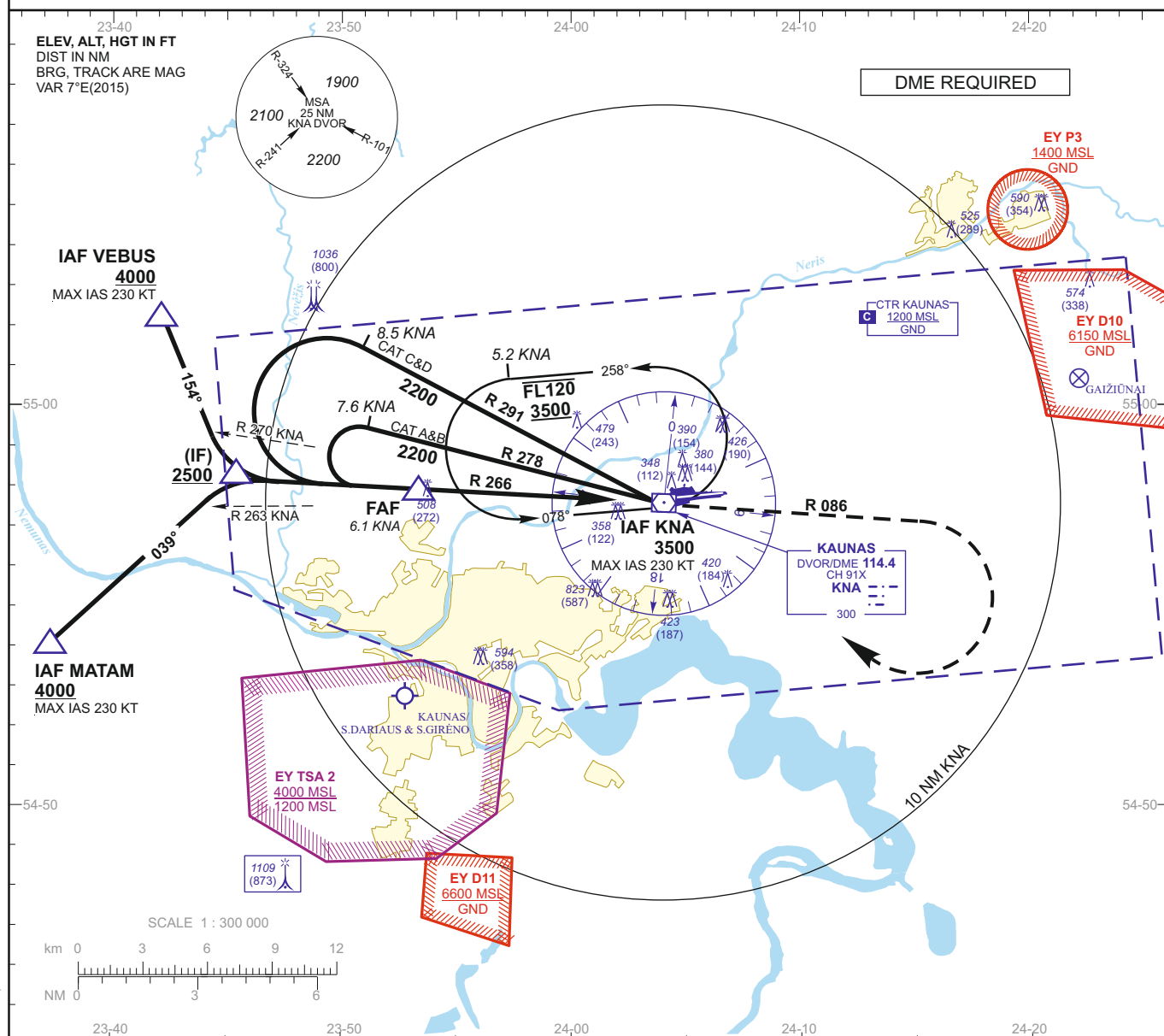
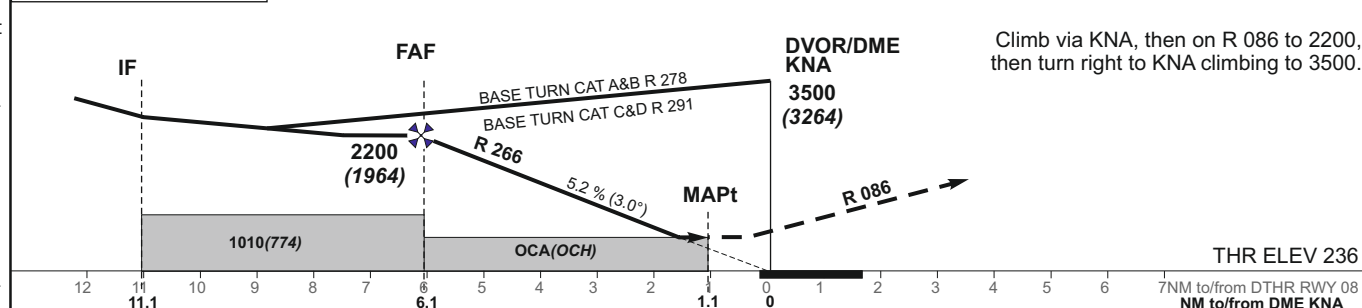


INSTRUMENT APPROACH
CHART - ICAO**AERODROME ELEV 256**
HEIGHTS RELATED TO
THR RWY 08 - ELEV 236TWR 124.200
118.500
ATIS 129.050**KAUNAS**
VOR RWY 08

TRANSITION ALT 5000

MISSED APPROACH PROCEDURE

Climb via KNA, then on R 086 to 2200,
then turn right to KNA climbing to 3500.

OCA(OCH)		A	B	C	D	DIST DME KNA				5	4	3	2	
STRAIGHT-IN APPROACH	VOR/DME	760 (524)				Altitude				1850	1530	1220	900	
						Height				(1614)	(1294)	(984)	(664)	
CIRCLING		see EYKA-AD-2.24-40 - 1				Timing not authorized for defining the MAPt								
Remark:						GS		Kts	80	100	120	140	160	180
						FAF-MAPt 5.0 NM		min:sec	3:45	3:00	2:30	2:09	1:53	1:40
						Rate of descent		ft/min	415	520	625	730	835	940
						For data tabulation see verso								

KAUNAS
RWY 08

AERONAUTICAL DATA TABULATION

VOR INSTRUMENT APPROACH from IAFs(KNA DVOR/DME, MATAM, VEBUS)	
FIX/POINTS	COORDINATES
MATAM (IAF) - BRG 070.60° / 15.74 NM KNA	54 54 08.9N 023 37 22.7E
VEBUS (IAF) - BRG 103.90° / 13.40 NM KNA	55 02 19.2N 023 42 11.7E
KNA DVOR/DME (IAF)	54 57 37.4N 024 03 59.1E
(IF) - BRG 086.20° / 11.14 NM KNA	54 58 10.8N 023 44 41.1E
FAF - BRG 086.20° / 6.14 NM KNA	54 57 56.2N 023 53 21.2E
MAPt - BRG 086.20° / 1.09 NM KNA	54 57 40.9N 024 02 05.7E
THR RWY 08	54 57 45.60N 024 03 34.16E
DTHR RWY 08	54 57 46.43N 024 03 51.01E
Final approach descent angle: 2.98°	